

A photograph of four people walking through a field of tall grass at sunset. From left to right: a man in a tan shirt and hat, a woman in a pink shirt and hat, a woman in a light blue shirt and cap, and a man in a blue shirt and hat. The background shows trees and a warm, golden light.

The journey to Carbon Neutral

Doug McNicholl

Program Manager – Sustainability Innovation
Research, Development and Adoption



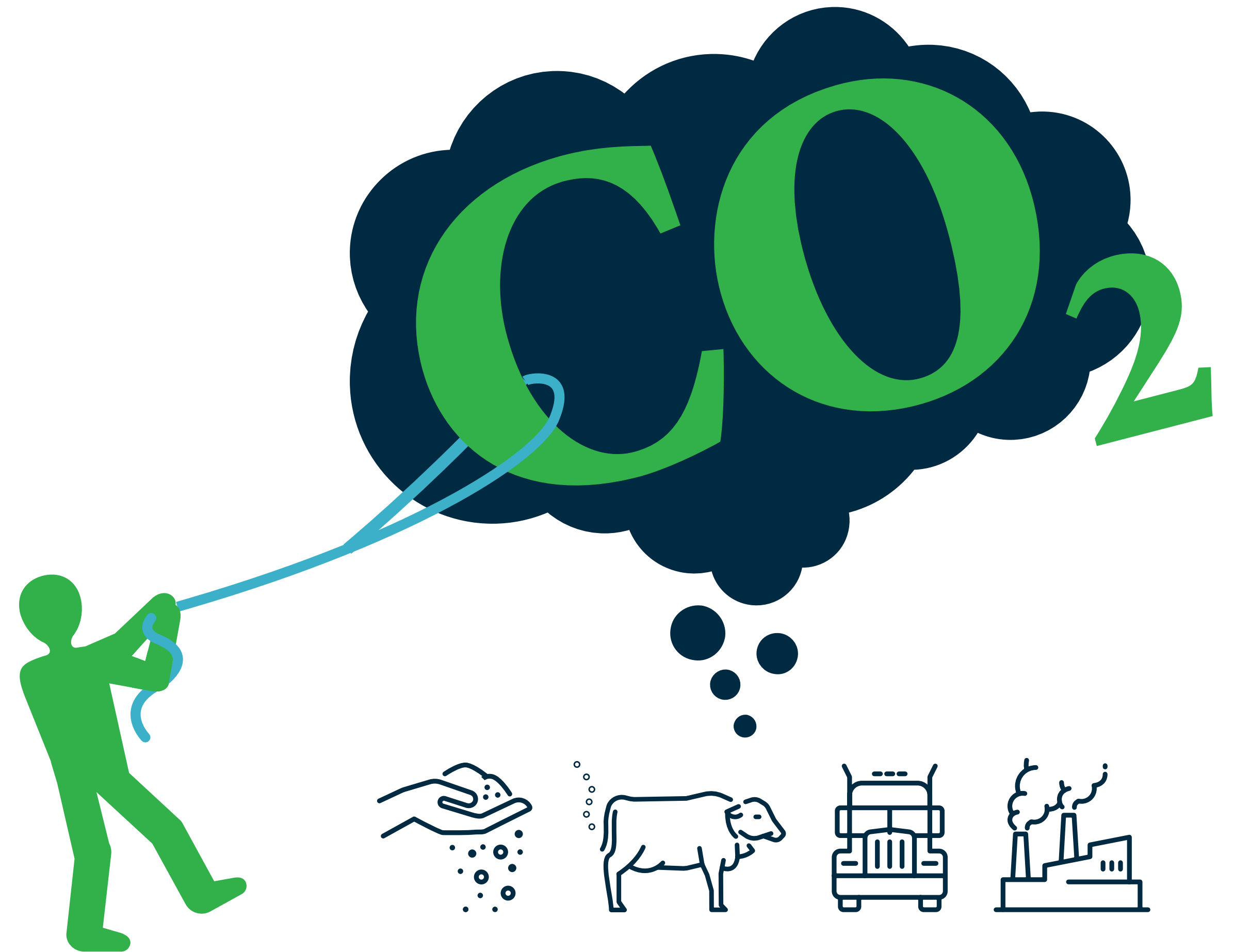
1. Description, rewards, and progress

2. Key work areas

3. Steps to a carbon neutral position

Two key components:

1. Aspirational target – for the Australian red meat industry to achieve net zero greenhouse gas (GHG) emissions by 2030
2. Coordinated RD&A effort



GHG emissions are measured and reported by the National Greenhouse Gas Inventory accounts:

$$\text{GHG emissions} - \text{Emissions captured and/or offset} = 0 \text{ tonnes CO}_{2e}$$

Rewards for climate-smart producers

Consumer and community support	Market access	Access to capital	Less blunt regulation	More productive land, animals and people
Increased demand for and/or value of Australian red meat	Increased market access (such as EU markets)	Increased access to funding or lower cost of capital	Reduced risk of state or federal government regulatory intervention	Improved adaptation enabling ongoing productivity

This means:

- increased revenue
- the trusted source of the highest quality protein.

Industry progress



Red meat + manufacturing

THE ONLY MAJOR SECTORS in the Australian economy to **REDUCE EMISSIONS** since 1990, with red meat making by far the greatest reduction³

Red meat producers manage



HALF OF AUSTRALIA'S LAND MASS

Most of this land isn't suitable for crop production - in fact, <8% of Australia's land mass is suitable for cropping⁴

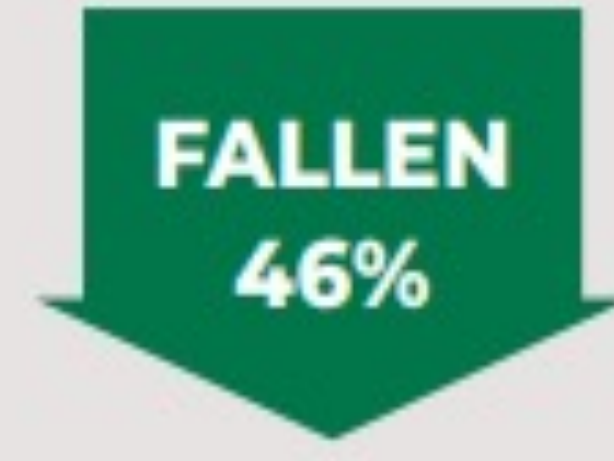
Greenhouse gas emissions from the Australian red meat industry have



FALLEN 53%

since 2005¹

The Australian red meat industry's contribution to national emissions has



FALLEN 46%

since 2005²

Key work areas



1. Industry leadership



2. GHG emissions avoidance

- Grazing properties
- Feedlots
- Processing facilities



3. Carbon storage

- Grazing properties



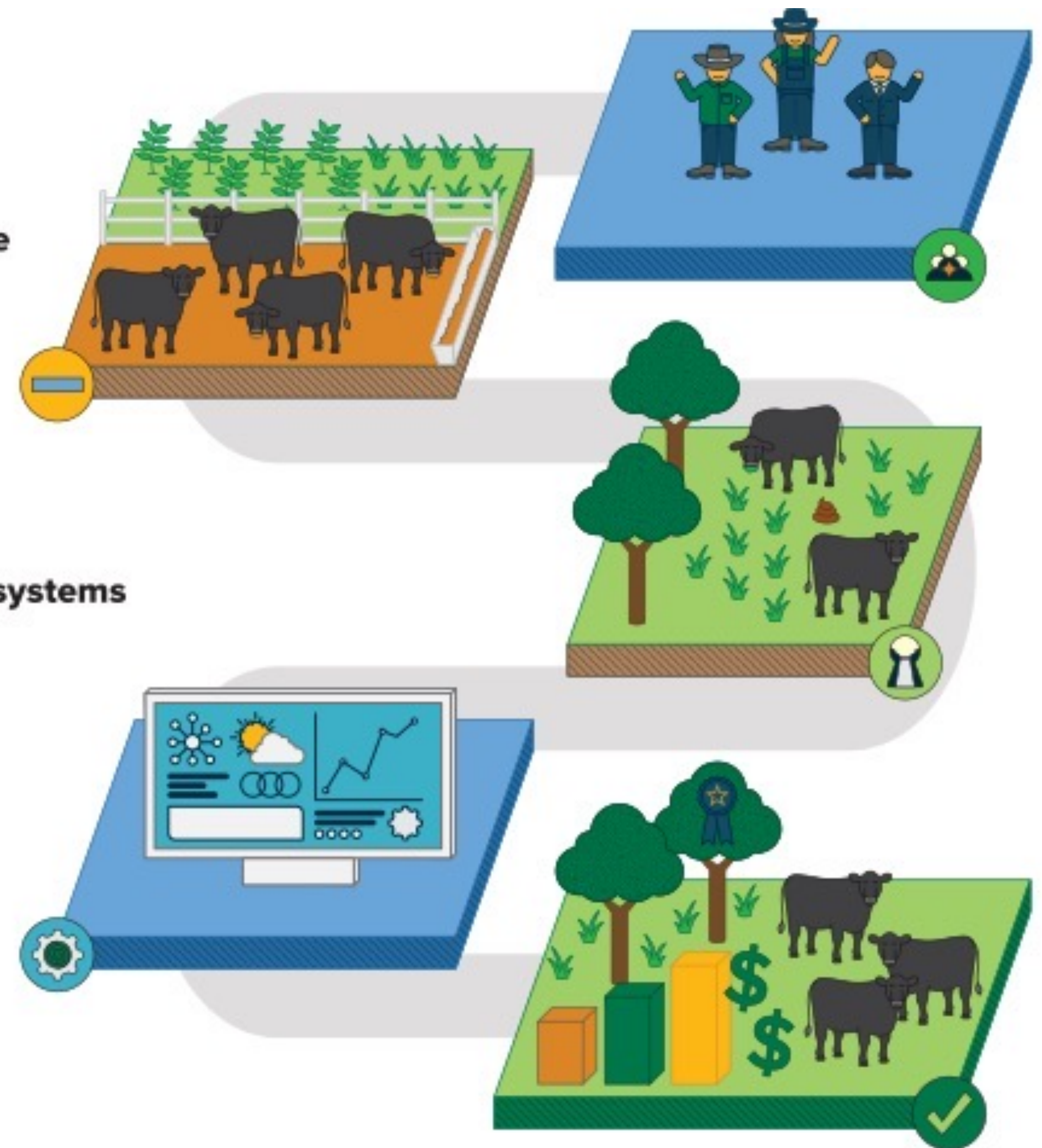
4. Integrated management systems

- Rapid adoption
- Carbon accounting
- Measurement & reporting



Multiple benefits

- Demonstrated environmental stewardship
- Increased profitability
- Increased animal productivity



Steps to a carbon neutral position

1. Understand your drivers and goals
2. Establish baseline
3. Evaluation emissions reduction options
4. Evaluate emissions offset options
5. Measurement and reporting
6. Seek advice (farm advisors, carbon project developers, others who have walked the talk)



Some early movers

Arcadian is a 100% Carbon Neutral Business



OUR PROSPERITY IS TIED TO THE LAND. WE WANT TO DO EVERYTHING WE CAN TO KEEP OUR COUNTRY HEALTHY AND PRODUCTIVE.

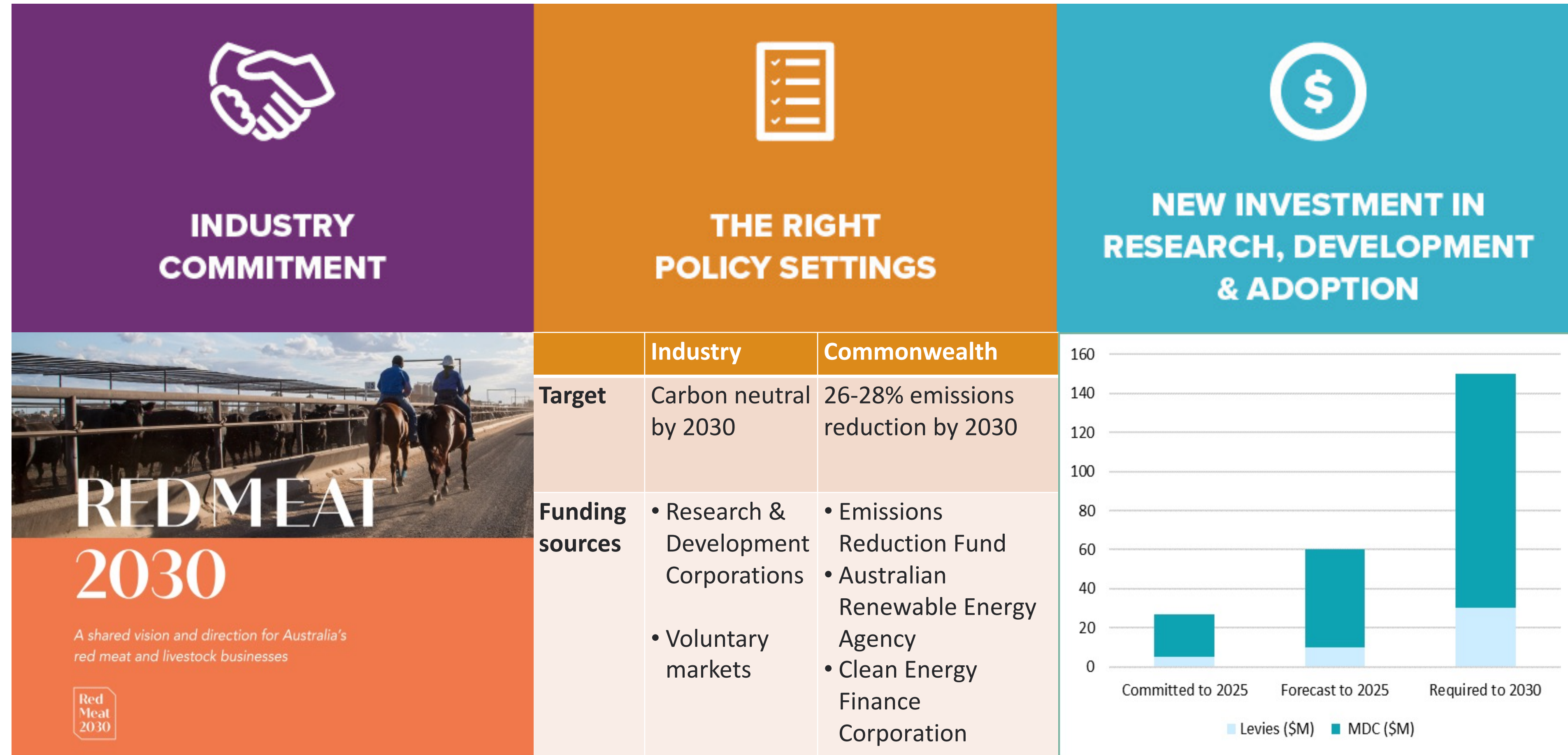


OUR GOAL IS NET ZERO EMISSIONS BY 2025

In 2018, Independent Consultants were engaged to calculate NAPCo's Life Cycle Assessment, evaluating the environmental impacts and resources used throughout the full life cycle of breeding, raising and delivering our product to the marketplace.



Industry needs to achieve CN30



A vision for our Industry's future

“By 2030, consumers buy Australian red meat knowing it's good for the environment”



Thank you

Disclaimer

Care is taken to ensure the accuracy of the information contained in this publication. However MLA cannot accept responsibility for the accuracy or completeness of the information or opinions contained in the publication. You should make your own enquiries before making decisions concerning your interests. MLA accepts no liability for any losses incurred if you rely solely on this publication.

Information contained in this publication is obtained from a variety of third party sources. To the best of MLA's knowledge the information accurately depicts existing and likely future market demand. However, MLA has not verified all third party information, and forecasts and projections are imprecise and subject to a high degree of uncertainty.

MLA makes no representations and to the extent permitted by law excludes all warranties in relation to the information contained in this publication. MLA is not liable to you or to any third party for any losses, costs or expenses, including any direct, indirect, incidental, consequential, special or exemplary damages or lost profit, resulting from any use or misuse of the information contained in this publication.

Full terms of use at www.mla.com.au