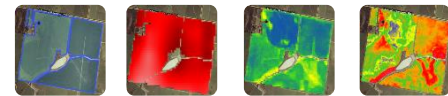


On-farm trials in PASource

Dr Ben Jones

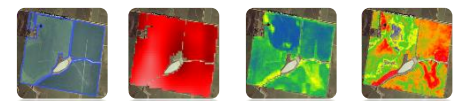
Founder, PASource.

Vic Mallee Researcher and former farmer.



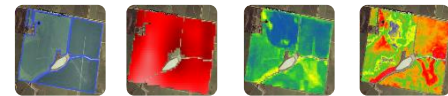
Why on-farm trials in PASource?

- Working with yield map data is not easy!
- Looking for ways to make on-farm trials accessible and done well, without an excessive technical 'hurdle'.
- More than just 'trials'!



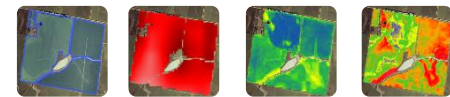
What we do currently

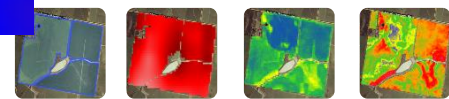
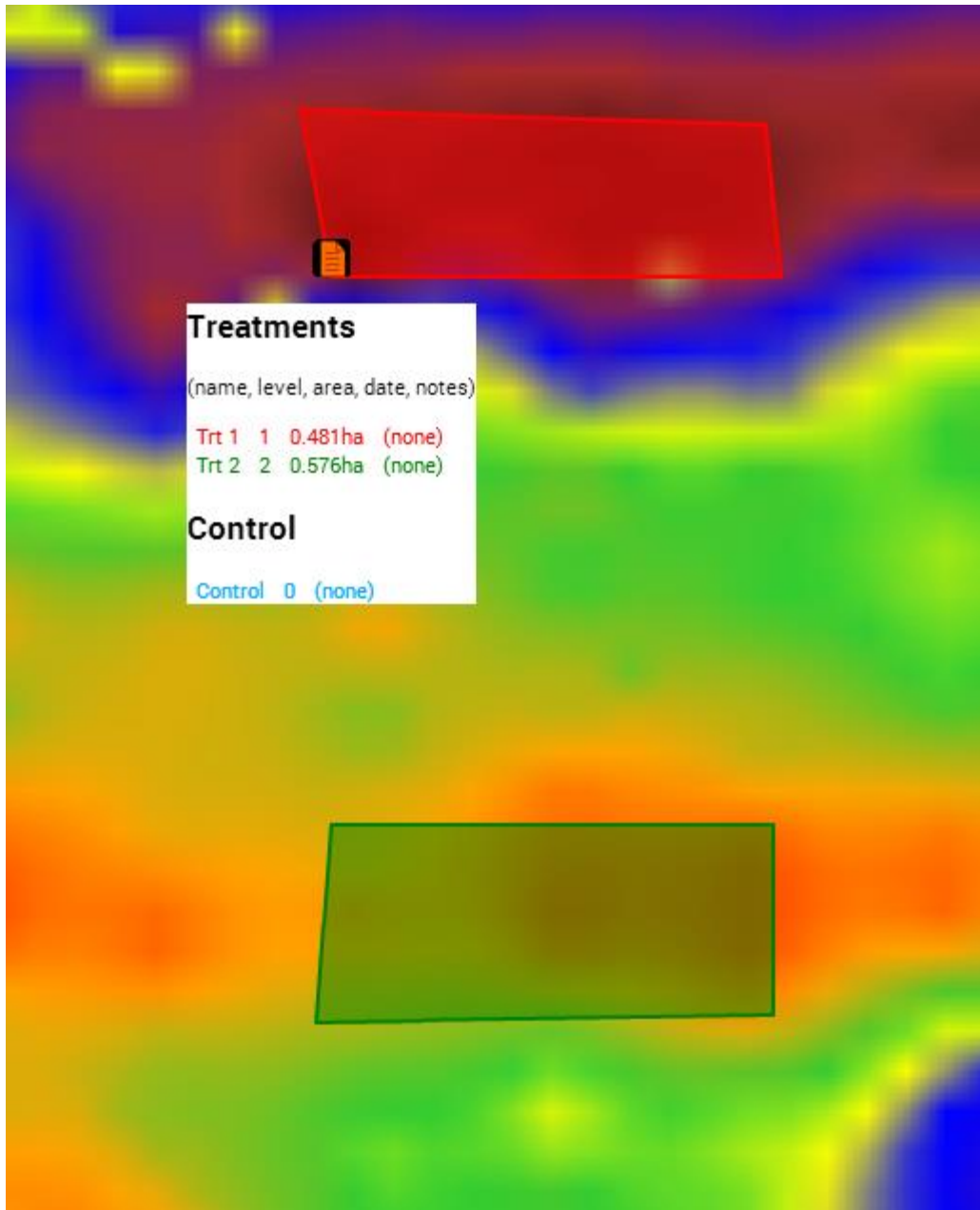
- 'Trials' to record locations, treatments etc.
- Buffering of edges, graphical display along edges
- Automated layer queries for trial areas



What we'd like to do

- Pass-to-pass error in control areas for assessing treatment differences
- Useable area map
- Easy access to underlying data
- Analysis with covariates (eg EM38, elevation), better incorporation of kriging





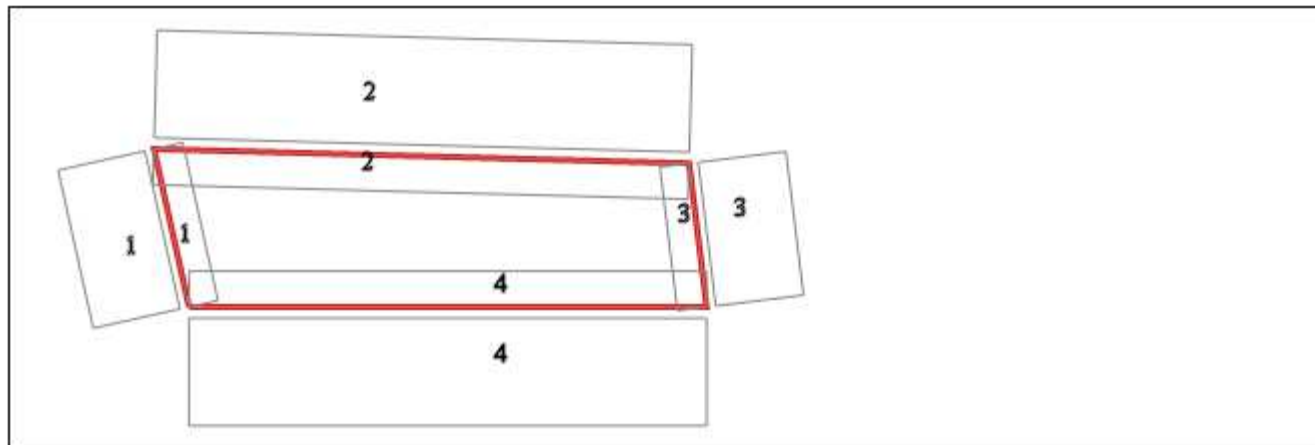
Analysis of Trial 2

Treatment strip: 8.0m, control: 24.0m, inside buffer: 0.0m, outside buffer: 2.5m, analysis interval: 10.0m.

Treatment Trt 1

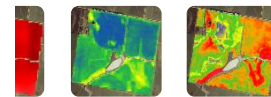
Map of treatment and analysed area:

(level=1, area=0.481ha)



Analysis against EM38\Vertical

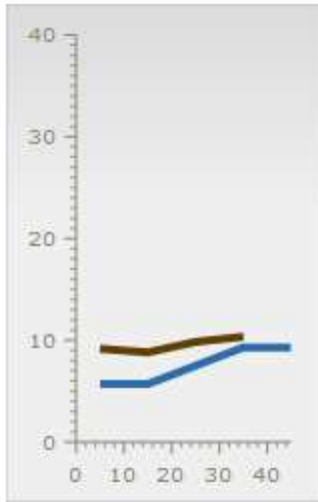
Side	Length	Data area	Control	Treatment	Difference
1	43.8m	208m ²	9.383	7.495	-1.888
2	119.4m	0.114ha	13.9	8.317	-5.585
3	39.3m	104m ²	10.12	8.58	-1.536
4	115.4m	0.125ha	26.14	7.254	-18.89
Summaries:					
Av. longest: (2, 4)	117.4m	0.120ha	20.02	7.786	-12.24
Av. all sides:	79.5m	676m ²	14.89	7.912	-6.975



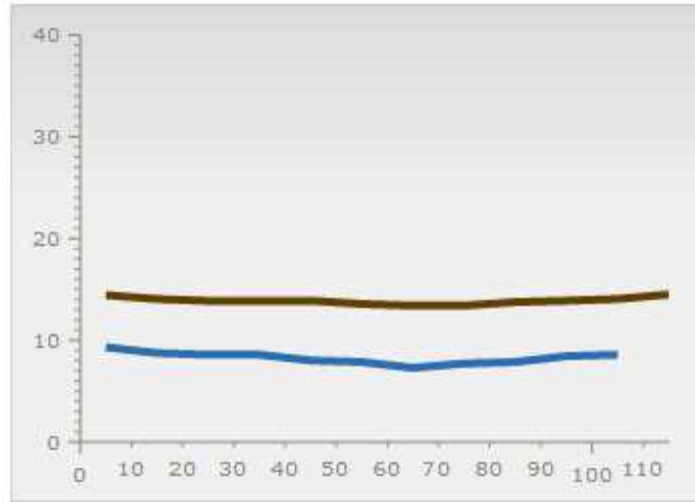
Averages along sides:

Control Treatment

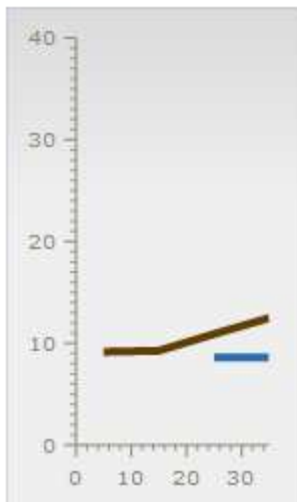
Side 1:



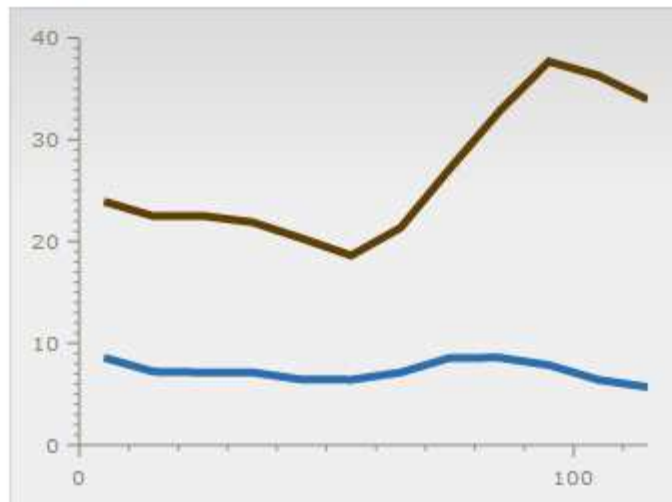
Side 2:



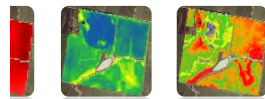
Side 3:



Side 4:



(y-axis = average, x-axis = distance along side in m, increasing in direction of side numbers)



Add trial to BR and NM Jones:

Continue

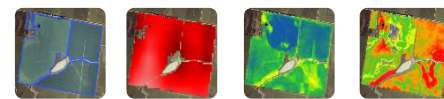
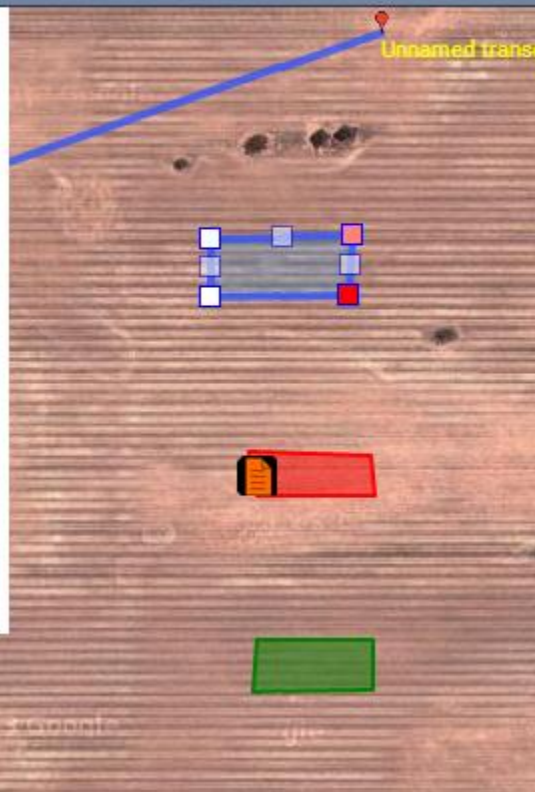
Cancel

Name:

About trials:

A trial is a part of paddock that is different from the rest. If you mark an area as a 'trial', PASource will use the adjacent parts of the paddock (usually on the long sides) as a control. There is no need to draw the controls in. You can have multiple treatments in one trial (add one or more 'shapes').

After drawing the treatments, you will be given the chance to label and colour them, and make general notes.



Cancel

Continue

Set treatments

Trt 1



Level: 1

Applied date:

Enter some notes...

Notes:

Cancel

Save

Trt 1 (0.790ha)



Control



+

-



Back

Finish

Set details

Trial name:

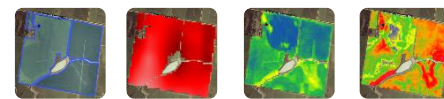
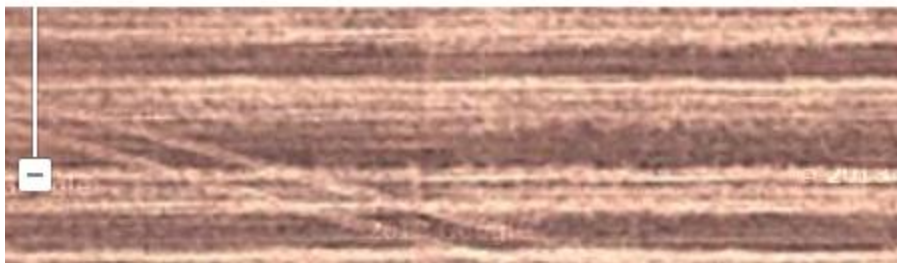
Trial

Widths:

Trt strip	Ctrl strip	Ins. buff.	Out. buff.	Anal. intval
+	+	+	+	+
10	10		2	10
-	-	-	-	-

General Notes:

Enter some notes...



- PASource.com.au

