



BIGG

Partnership Engagement

www.bigggroup.org.au

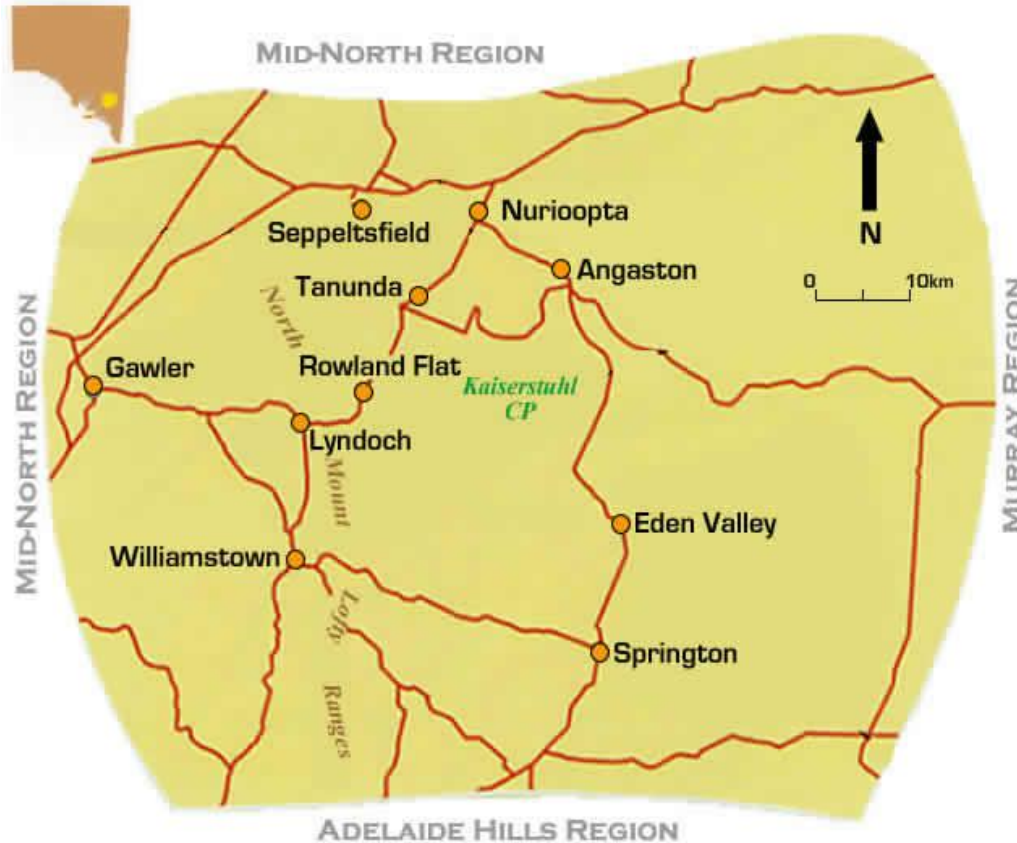
AgEx Forum, 18 March 2014



Barossa Improved Grazing Group



Government of South Australia
Adelaide and Mount Lofty Ranges
Natural Resources Management Board



Local Grower Groups

1. Angaston Ag Bureau
2. Koonunga Ag Bureau
3. North Rhine Sheep Group
4. Mt Pleasant Beef Group
5. Barossa Mid-Nth Dairy Discussion Group



BIGG Beginnings

- Initiated in 2012, through the *Winter Pasture NRM Project* funded by AMLR NRM
 - improve the capacity of winter pasture production; and
 - achieve on-farm NRM outcomes

Projects

- Total grant funding: \$280,000
- No. of projects: 10 (5 current)
- Funders: AMLR NRM, CfoC, DEWNR, SC, MLA
- Key current projects:
 - Soil moisture monitoring in local grazing systems (\$45,000)
 - The Barossa Pasture Challenge (\$29,500)





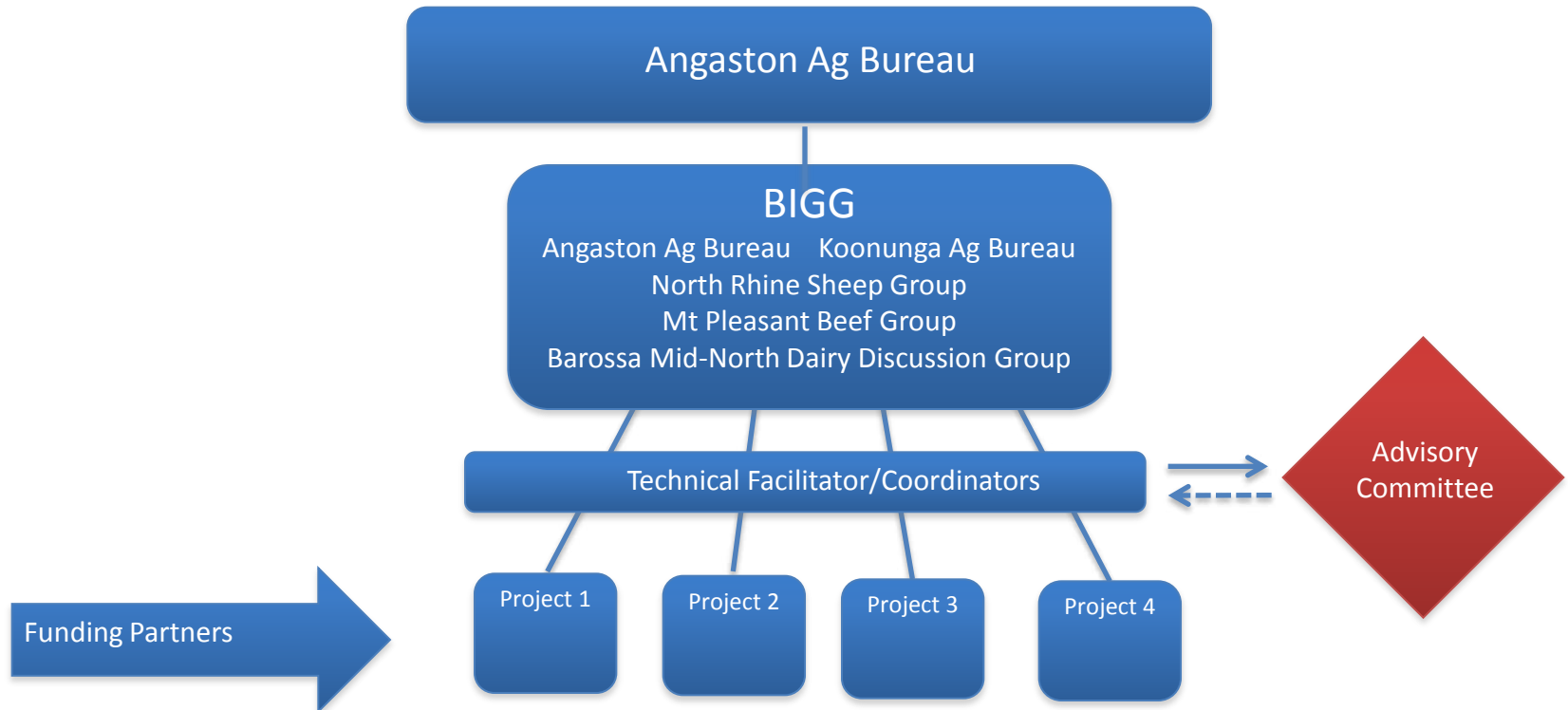
Partnership Engagement

Grower groups, Industry, Government

- Common interests (productivity & NRM)
- Ensuring broad consultation
- Sharing outcomes (communications)
- Advisory support (technical & strategic)



Governance Structure



1. Working Across Grower Groups

- Example: RAPPA project
 - Grazing management
 - Livestock, cropping & vineyard



2. Industry Engagement

- Project outreach
 - Example: workshops/forums
- Project implementation
 - Example: Soil moisture monitoring project



3. Government Engagement

- More than just funding
- Example: Natural Resources
Adelaide Mt Lofty Ranges





Take home message

- BIGG is the platform to bring stakeholders together
- Include all stakeholders in governance structure
- Shared interests = shared outcomes