

NORTHERN AND YORKE NRM REGION

**ACIDITY**

Classes are based on an interpretation of soil landscape map units. Acidity varies within soil classes (depending on management practice and climate), and within mapping units (which often include a complex of soils). Rankings are made according to pH measurements and extrapolation between similar environments. All land which is known to be acidic, or is similar to land known to be acidic is classified accordingly, regardless of land use or management. The acidity of each component of a mapping unit is assessed. The units are then classified according to the acidity of the most "at risk" component, provided that it accounts for more than 30% of the area of the map unit. Limited occurrences of acidic soils (ie account for 10 - 30% of the area of the map unit) are indicated as an additional class.

Classes take account of both surface and subsoil (ie deeper than 30 cm) acidity, and the buffering capacity of the surface soil (buffering capacity is an indication of the soil's capacity to resist acidification).

SOIL ACIDITY	SURFACE BUFFERING CAPACITY
Negligible	Any
10 - 30% of soils acidic *	Any
Surface soil only	Moderate to high
Surface soil only	Low
Surface and subsoil	Moderate to high
Surface and subsoil	Low
Not applicable	

\* Includes any susceptible soils, without distinction between surface and subsoil, or buffering capacity.

**NOTES ON USE OF THE MAP**

- 1 This information is derived from limited field inspection, and is subject to change without notice.
- 2 Boundaries between mapping units should be treated as transition zones.
- 3 The map is intended to provide a regional overview and should not be used to draw conclusions about conditions at specific locations.
- 4 Under no circumstances must the scale of the map be enlarged beyond its scale of mapping.
- 5 Advice from DEWNR Soil and Land Program should be sought prior to using this information for commercial decision making.
- 6 Under no circumstances may the data or information associated with this map or any accompanying report be altered in any way without the express permission of DEWNR Soil and Land Program.

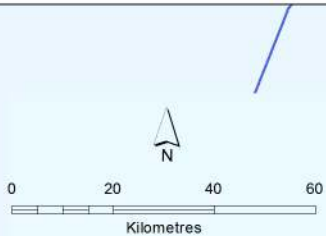
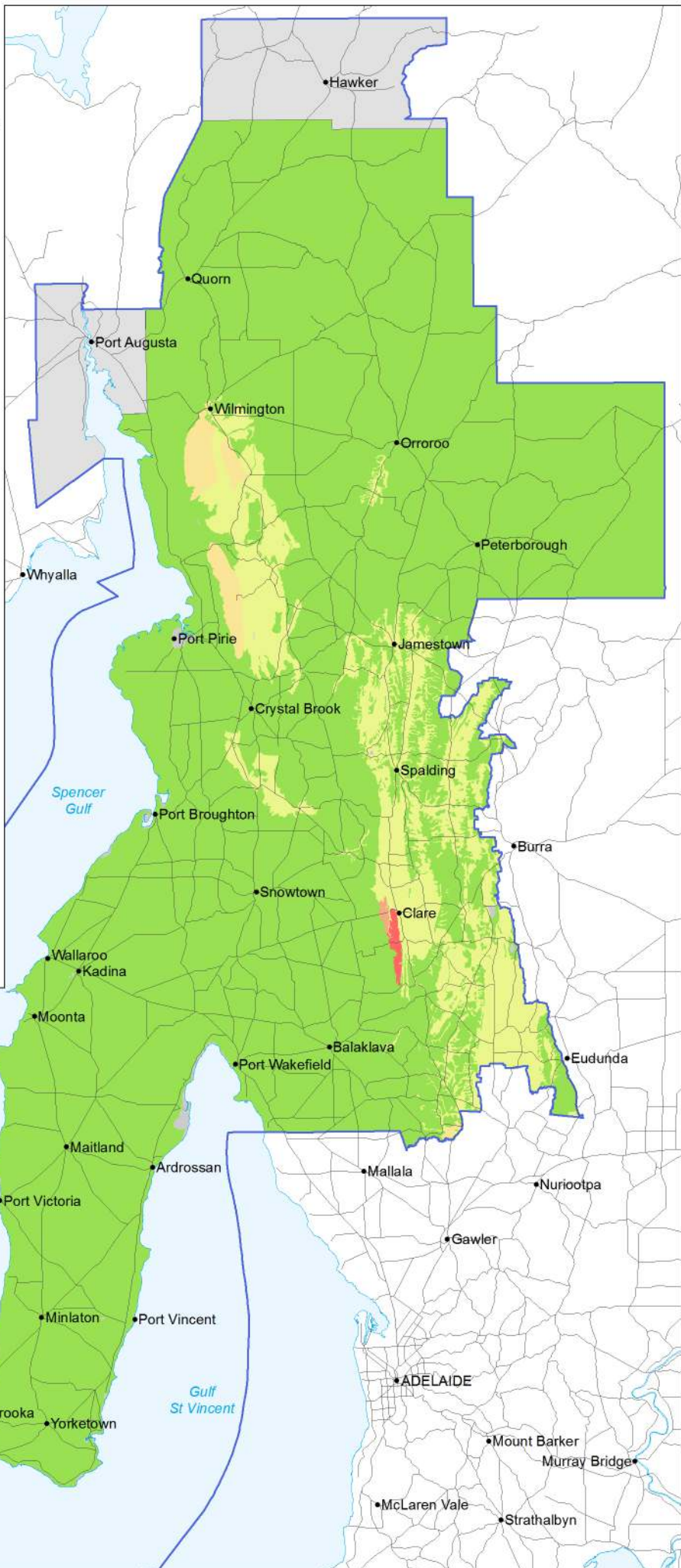
© Copyright Department of Environment, Water and Natural Resources 2013. All Rights Reserved. All works and information displayed are subject to Copyright. For the reproduction or publication beyond that permitted by the Copyright Act 1969 (Cwth) written permission must be sought from the Department.

Although every effort has been made to ensure the accuracy of the information displayed, the Department, its agents, officers and employees make no representations, either express or implied, that the information displayed is accurate or fit for any purpose and expressly disclaims all liability for loss or damage arising from reliance upon the information displayed.

Land assessment: DEWNR Soil and Land Program, July 2009  
Map projection, datum: Map Grid of Australia, Zone 54, GDA94



**Government of South Australia**  
Department of Environment,  
Water and Natural Resources



- Northern and Yorke NRM Region
- No data
- Main Road